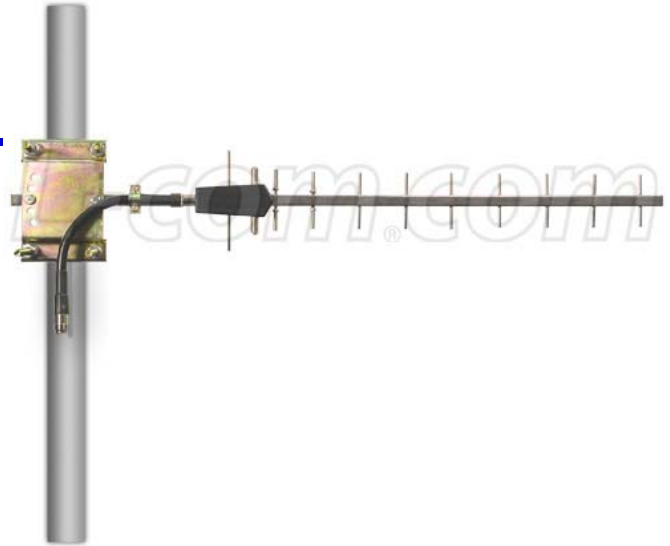


HyperLink Wireless brand 1.8 GHz / 1.9 GHz 12 dBi Stainless Steel Yagi Antenna - Model: HG1912SY

Applications and Features

- Applications:**
- 1.9 GHz band applications
 - Personal Communication Service (PCS)
 - Directional and multipoint applications

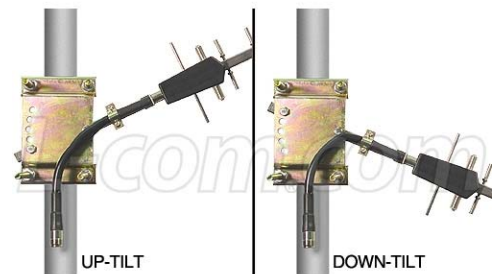
- Features:**
- Superior performance
 - Light weight
 - All weather operation
 - Stainless steel construction
 - 40° beam-width
 - DC Short lightning protection
 - Includes tilt and swivel mast mount



Description

The HyperGain® HG1912SY Yagi antenna features high gain and a 38° beam-width. It is ideally suited for directional and multipoint 900 MHz band applications such as Personal Communication Services (PCS) and 1.9GHz cellular band applications.

This antenna features a heavy-duty 1/2" stainless steel boom and solid 1/8" stainless steel elements which ensures superior durability and long performance life in all weather conditions. The HG1912SY antenna is supplied with a tilt and swivel mast mount kit. This mounts provides 0-20 degree up or down tilt in 10 degree increments.



Specifications

Electrical Specifications

Frequency	1710-1990 MHz
Gain	12 dBi
Polarization	Vertical
-3 dB Beam Width	38 degrees
Front to Back Ratio	15 dB
Impedance	50 Ohm
Max. Input Power	200 Watts
VSWR	< 1.5:1 avg.
Lightning Protection	DC Short

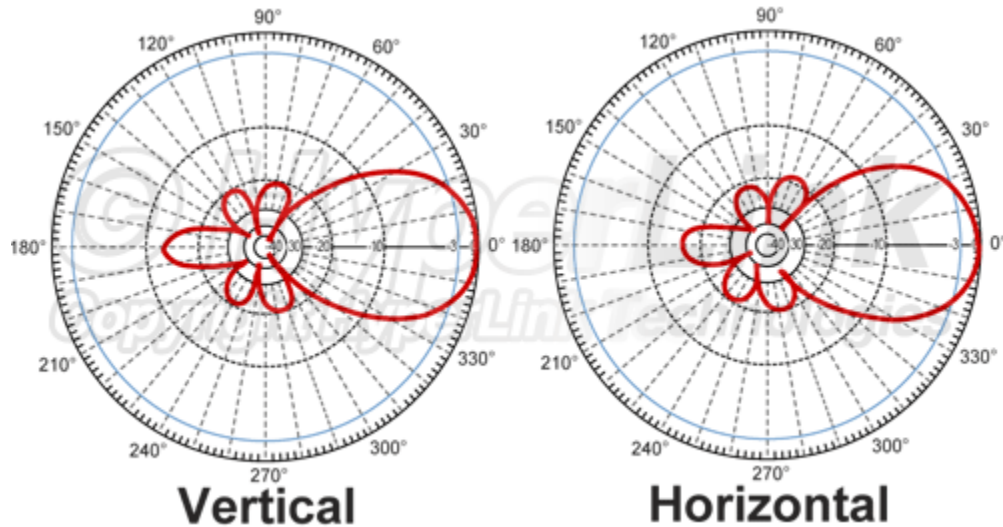
Mechanical Specifications

Weight	1.7 lbs. (.8 kg)
Length	27.7 in. (704 mm)
Elements	11
Operating Temperature	-40° C to to 85° C (-40° F to 185° F)
Mounting	1.5" (40 mm) to 2.3" (60 mm) dia. masts
Wind Survival	>124 MPH

Wind Loading Data

Wind Speed (MPH)	Loading
100	5.6 lb.
125	8.8 lb.
100 with 1/2" Radial Ice	8 lb.

Antenna Gain Patterns



Guaranteed Quality

This product is backed by Hyperlink's Limited Warranty.