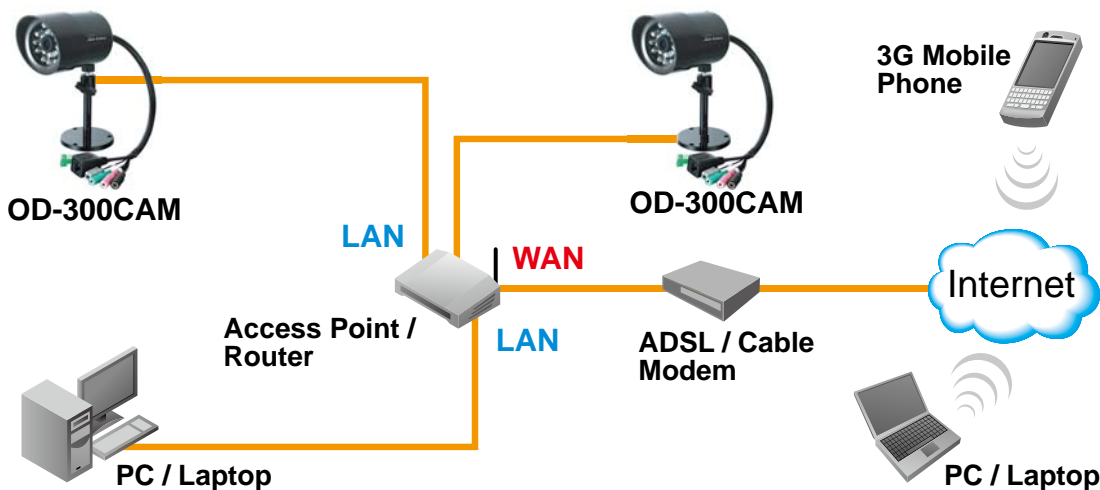


OD-300CAM

Dual Stream Outdoor Infrared IP Camera

The OD-300CAM is a high-performance camera designed for professional outdoor surveillance and security applications. The VGA Progressive CMOS Sensor in the OD-300CAM delivers exceptional picture quality. Equipped with PoE support, the OD-300CAM can receive both power and data over a single ethernet cable, allowing you to place this camera in locations without a power outlet.



IP66 Waterproof Resistance

The OD-300CAM is an IP66 rated weather proof IP camera designed for 24hr indoor/outdoor surveillance even in the harshest conditions.

Infrared LEDs

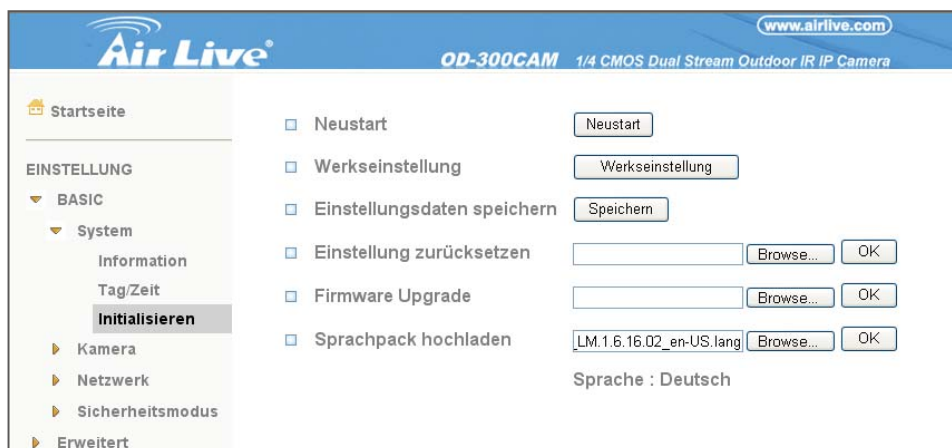
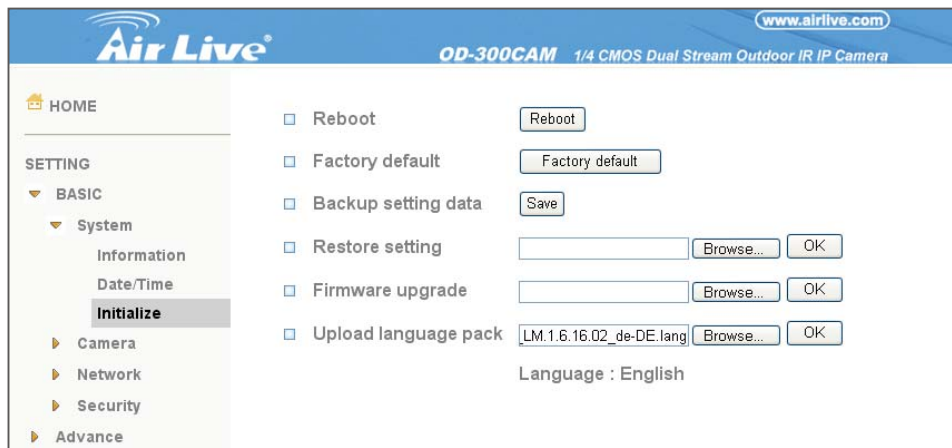
The OD-300CAM is equipped with high resolution CMOS sensor with infrared LEDs with a working distance up to 15m. The auto-changeable infrared filter inside also provides superior day/night performance. It also offers many important features such as PoE and digital input and output for external alarm & sensor.

Video Quality

The OD-300CAM supports simultaneous dual-streaming of MPEG-4 and Motion JPEG (MJPEG) to provide both high quality and bandwidth efficient compression formats. MJPEG delivers greater file integrity, making it ideal for detailed monitoring situations. MPEG-4 video has smaller file sizes, making it more useful for extended recording periods or for use in low bandwidth networks.

Language Pack Feature

This camera also comes with upgradeable device language pack offering fourteen different languages for user-friendly operation. The language pack support 14 languages now and still updating. These languages include Chinese, German, Spanish, Russian, Czech, Portuguese, and more.



View from Mobile Phone

The RSTP protocol feature allows 3G and 2.5G mobile phones to display captured images from the camera for live video surveillance from a remote location. With automatic light adjustment that eliminates bit rate problems caused by poor night time performance, OD-300CAM is the perfect solution to remotely monitor your house while you are traveling.

- * The mobile device must be Internet-ready. Supporting Real Time Streaming Protocol (RTSP) and is equipped with a 3G video player such as PacketVideo™, Quicktime™, or RealPlayer™, and have Internet access.
- * A PoE Switch or router is required to provide power via the Ethernet connection.
- * Using video equipment for recording people's image without their knowledge and consent is prohibited in certain states or jurisdictions. The end-user assumes all liability for compliance with applicable state, local, and federal laws.

AirLive CamProExpress

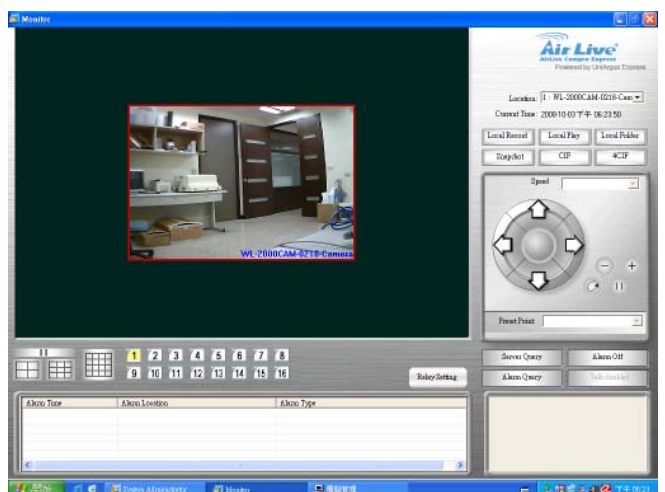
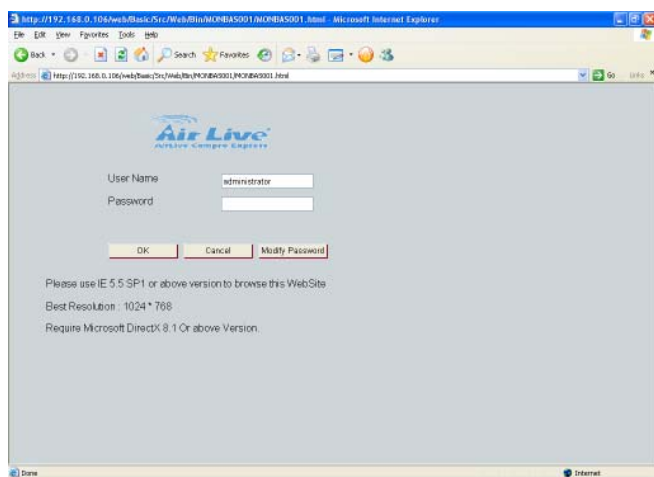
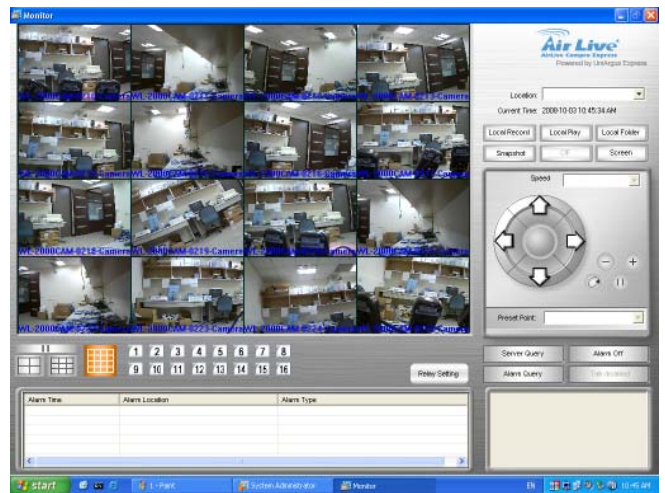
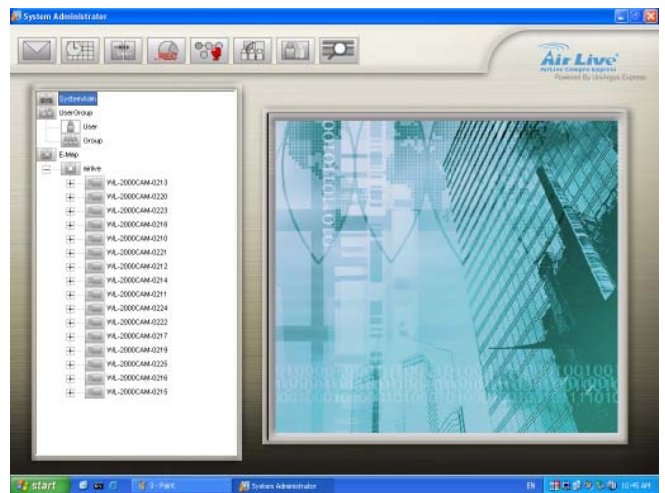
The AirLive CamPro Express supports 16 cameras, providing a fully integrated surveillance and alarm management solution. The AirLive CamPro Express is complete freeware for you to do the central monitor. The CamPro Express supports WL-2000CAM, POE-100CAM, POE-200CAM, OD-300CAM, WL-2600CAM.

- The E-map user interface and intelligent privilege management solve management problems.
- Multiple rotation screens (1/4/9/16) provide the most flexible method to monitor your surveillance installation.

The CamPro Express allows you to monitor 16 channels via the computer and WEB UI. You can choose how you would like to view the camera, the Cam Pro Express supports 1/4/9/16 different view. You can also choose to view the different camera in single view or 1/4/9/16 view.

Web Monitor

The CamPro Express supports you to view from the remote site of computer. By simple step that you install the IIS Server into your computer you can view your home or office when you are overseas.



CamPro Express system provides a solution for local stores, supermarkets, warehouses, petrol stations, government offices, buildings, schools, car parks, holiday villas, luxury homes and many other applications.

Hardware Specification

Sensor

- 1/4" Progressive CMOS Sensor

Lens

- 4.3mm, F2.0 Board Lens

Minimum Illumination

- 0 Lux with IR LED on

Infrared Filter

- Automatic removable Infrared-cut filter with adjustable threshold

Infrared Working Distance

- 15 Meters

System

- ARM9 based 32-bit RISC CPU, 8MB Flash, 64 MB RAM
- Embedded OS: Linux 2.4

Video Compression

- MPEG-4, Motion JPEG
- Adjustable Bitrate (64Kbps to 2048Kbps), Quality and Bitrate

Video Resolution

- Up to 30 frames in all resolutions

Video Streaming

- Simultaneous MPEG-4 & MJPEG (Dual Streaming)
- Supports Unicast & Multicast
- Supports 3GPP/ISMA RTSP (Real Time Streaming Protocol)

Audio

- Two-way audio (full-duplex)

Alarm and Event

- Built-in multi-window motion detection

- Input x 1, Output x 1 for External Alarm & Sensor (DIDO)
- Triggered and scheduled events, Pre- and Post-alarm buffer

Supported Protocols

- TCP/IP, DHCP, PPPoE, ARP, ICMP, FTP, SMTP, DNS, NTP, UPnP, RTSP, RTP, HTTP, TCP, UDP, 3GPP/ISMA RTSP

Security

- ID/Password Authentication; SSL Protocol V3.0

Power

- 12V DC, 1A, Max 6W
- PoE (Power over Ethernet) Built-in IEEE 802.3af Class 0

Connectors

- Ethernet – RJ45 for 10/100 Base-T (with PoE)
- 12V DC
- Input x 1, Output x 1 for External Alarm & Sensor (DIDO)
- 3.5mm Audio Input, 3.5mm Audio Output
- Reset Button

Operating Environment

- -10° - 50 °C (14° - 122°F)
- Humidity 20 - 80% RH (non-condensing)

Video Surveillance Software

- Professional surveillance application for viewing, recording and archiving up to 16 cameras

Approvals

- CE, FCC, RoHS

Dimension

- 99mm x 73mm (φ)

Ordering Information:

AirLive OD-300CAM Dual Stream Outdoor Infrared IP Camera